

Filters

Coalition

County 1

Select Period

Rolling Annual

Trend Line

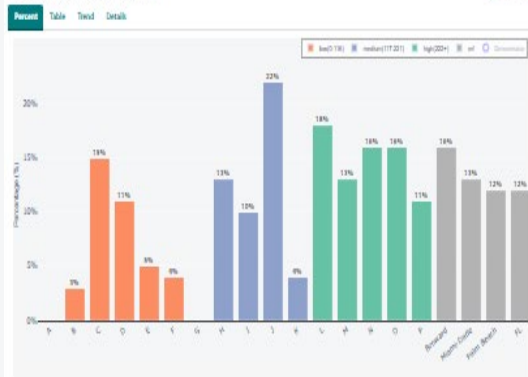
Select Hospital

A

Select more Locations to compare

FL

1. Percent IV Thrombolysis (IVT) Overall



2. Percent IV-Thrombolysis Arrive by 3.5hrs and Treat by 4.5hrs



3. Median Door to Needle among those receiving IVT



4. Percent mRS 0-2 at Discharge among all receiving IVT



5. Percent mRS 0-2 at 90 days among all receiving IVT



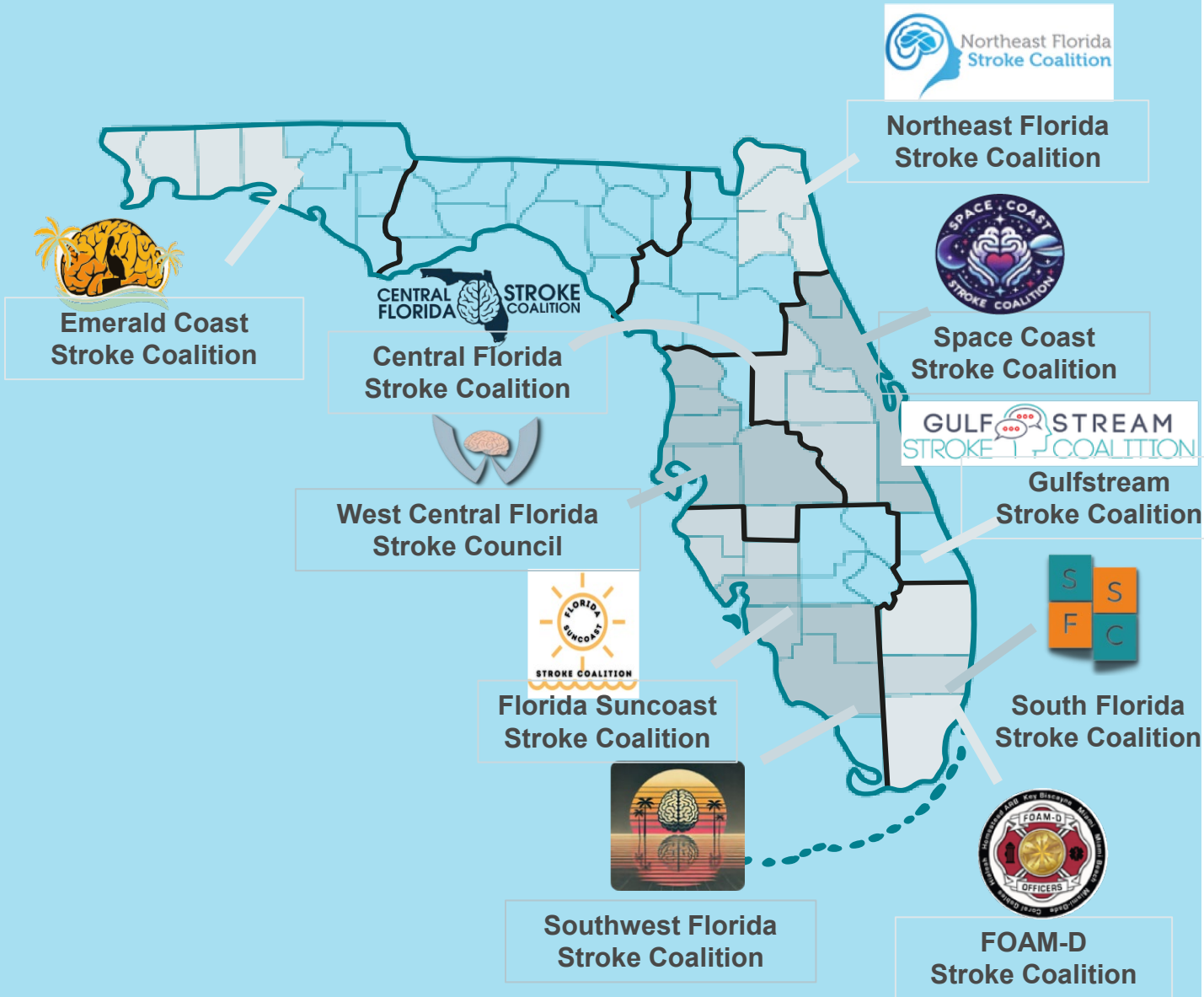
6. Percent symptomatic intracranial hemorrhage within 36 hours after IVT treatment



What is an FSR Regional Dashboard...

- Quality improvement tool
- Developed by the FSR
- Created through a grassroots effort
- Initiated in 2016 by FSR Stakeholders from Broward and Palm Beach County (i.e., EMS Medical Directors, Stroke Center Directors, neuro-interventionalists)

Applied in Stroke Coalitions Recognized by the FSR



- FSR Regional Dashboards are provided only to hospitals and EMS systems participating in FSR recognized stroke coalitions (9 to date).
- County/Region-specific hospital reperfusion performance measures are displayed side-by-side allowing comparison across (blinded) local stroke centers and benchmarked by neighboring counties and the state.



Intravenous Thrombolysis (IVT) Measures:

1. Percent IV Thrombolysis (IVT) Overall
2. Percent IVT among those arriving in 3.5 hrs., treat by 4.5 hrs.
3. Median Door to Needle among those receiving IVT
4. Percent mRS 0-2 at Discharge among those receiving IVT
5. Percent mRS 0-2 at 90 Days among those receiving IVT
6. Percent symptomatic intracerebral hemorrhage after IV

Interfacility Transfer Measures:

1. Door In Door Out (Ischemic Stroke)
2. Door In Door Out (Hemorrhagic Stroke)

Endovascular (EVT) Measures:

1. Percent EVT among those Arriving in 24 Hours
2. Median Door to Groin Time all EVT (transfers included)
3. Percent mRS 0-2 at Discharge among those receiving EVT
4. Percent mRS 0-2 at 90 Days among those receiving EVT
5. Percent symptomatic intracerebral hemorrhage after IA tPA or MER

11 reperfusion & 2 interfacility transfer acute stroke performance measures displayed

- Disseminated quarterly (reporting 3 months of data and, separately, 12 months of data)
- Hospital data is blinded and displayed by ischemic volume
- Participating hospitals are benchmarked across neighboring hospitals and counties (participating in a stroke coalition)

1. Percent IV Thrombolysis (IVT) Overall

[enter fullscreen](#)

Percent Table Trend Details



Numerator: IV-Thrombolysis initiated at this hospital

Denominator: Includes ischemic stroke patients with data available for the PMT question "IV-Thrombolysis initiated at this hospital?"

FSR Regional Dashboards Improves Quality Stroke Care by...

facilitating collaboration between EMS and hospitals

2. Percent IV-Thrombolysis Arrive by 3.5hrs and Treat by 4.5hrs

[Enter](#)
[Fullscreen](#)



Numerator: Patients who received IVT \leq 4.5 hours of onset

Denominator: Patients with a diagnosis of ischemic stroke

3. Median Door to Needle among those receiving IVT

[enter](#)
[fullscreen](#)

Time Table Trend Details



SAMPLE

FSR Regional Dashboards Improves Quality Stroke Care through...

shared best practices

Numerator: IV-Thrombolysis initiated at this hospital

Denominator: Includes ischemic stroke patients with data available for the PMT question "IV-Thrombolysis initiated at this hospital?"

4. Percent mRS 0-2 at Discharge among all receiving IVT

[enter](#)
[fullscreen](#)



Numerator: Modified Rankin Score 0-2 at discharge

Denominator: Includes ischemic stroke patients who received IV-Thrombolysis at this hospital with modified Rankin Score 0 to 6 at discharge (excluded age <18 years, clinical trial, stroke occurred after hospital arrival (in ED/Obs/Inpatient))

5. Percent mRS 0-2 at 90 days among all receiving IVT

[enter](#)
[fullscreen](#)

Percent Table Trend Age DIST NIHSS DIST Details



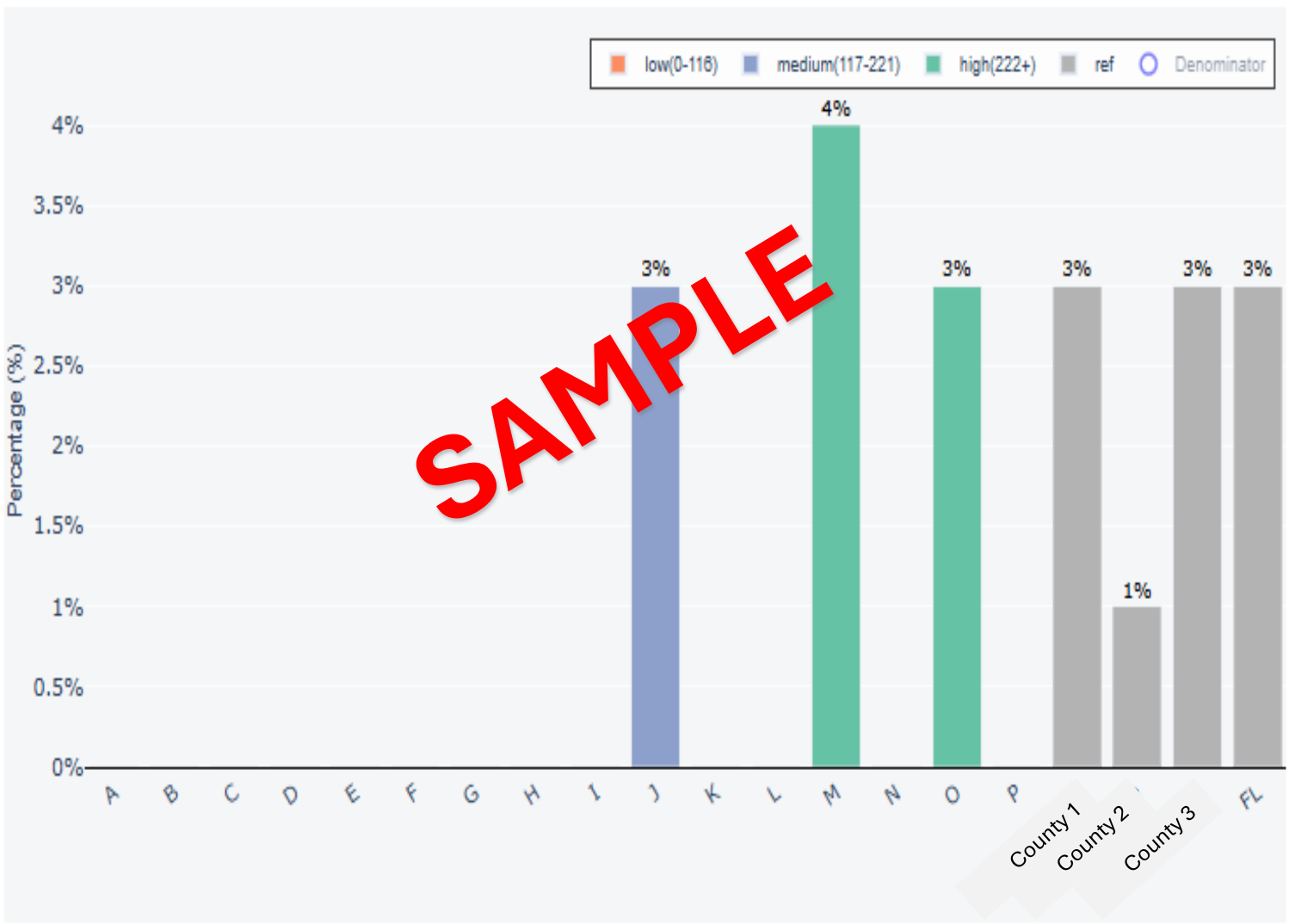
Numerator: Patients with mRS - 2 at 90 days follow-up

Denominator: Includes ischemic stroke patients who received IV-Thrombolysis at this hospital with modified Rankin Score 0 to 6 at 90 days follow-up

6. Percent symptomatic intracranial hemorrhage within 36 hours after IVT treatment

[enter](#)
[fullscreen](#)

Percent Table Trend Details

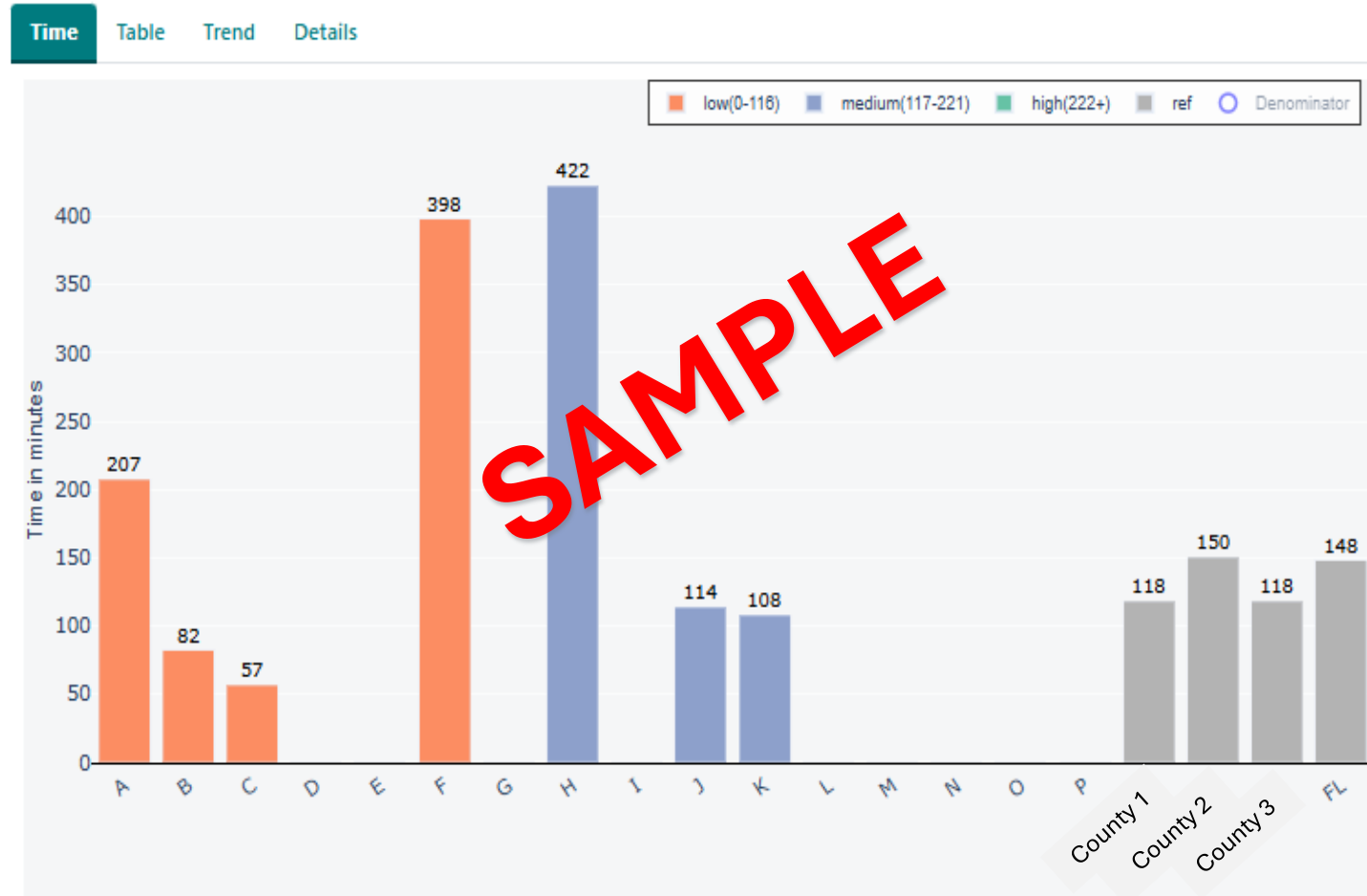


Numerator: Includes patients with Complications of Thrombolytic Therapy – Symptomatic intracranial hemorrhage within 36 hours after IV-Thrombolysis treatment

Denominator: Includes patients with a primary stroke diagnosis of ischemic stroke who received IV-Thrombolysis therapy only at the indicated hospital.

7. Median DIDO time for ischemic stroke

[enter](#)
[fullscreen](#)



FSR Regional Dashboards Improves Quality Stroke Care through...

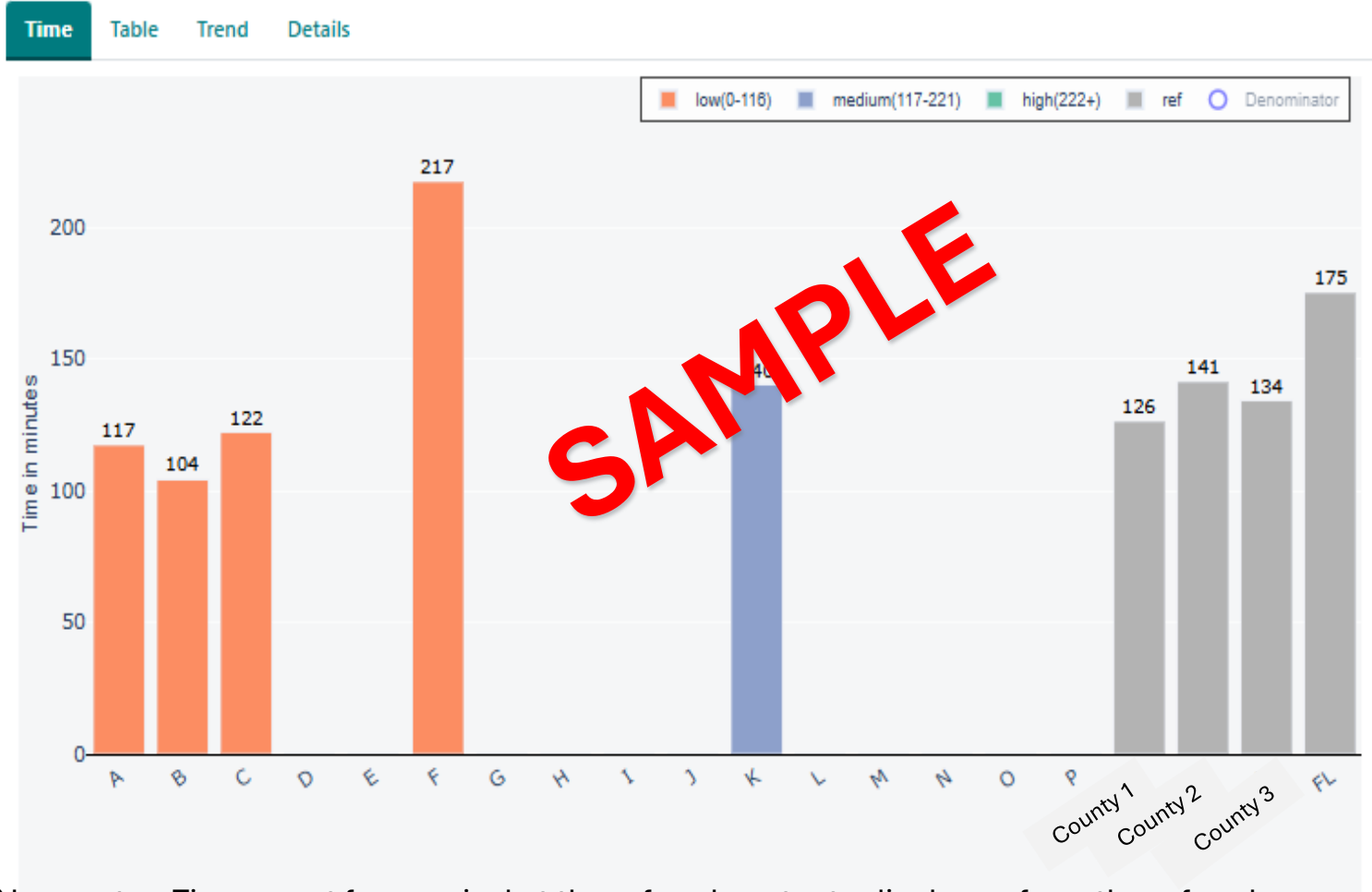
quarterly and annual tracking and measuring

Numerator: Time spent from arrival at the referral center to discharge from the referral center

Denominator: All patients in the Initial Patient Population who were transferred to a higher-level stroke center for time-critical therapy for ischemic stroke (evaluation for thrombolytic or EVT or post-thrombolytic care). Exclude patients that stroke occurred after hospital admission (in ED/Obs/Inpatient); patients who were transferred from another hospital; undocumented time for arrival to this hospital; undocumented time for discharge from this hospital; negative calculated time for discharge date/time from arrival date/time; clinical trial or elective carotid intervention only.

8. Median DIDO time for hemorrhage stroke

[enter](#)
[fullscreen](#)



FSR Regional Dashboards Improves Quality Stroke Care by...

benchmarking
locally and statewide

Numerator: Time spent from arrival at the referral center to discharge from the referral center

Denominator: All patients in the Initial Patient Population who were transferred to a higher-level stroke center for time-critical therapy for ischemic stroke (evaluation for thrombolytic or EVT or post-thrombolytic care). Exclude patients that stroke occurred after hospital admission (in ED/Obs/Inpatient); patients who were transferred from another hospital; undocumented time for arrival to this hospital; undocumented time for discharge from this hospital; negative calculated time for discharge date/time from arrival date/time; clinical trial or elective carotid intervention only.

9. Percent Thrombectomy among those Arriving in 24 Hour

[enter](#)
[fullscreen](#)



FSR Regional Dashboards Improves Quality Stroke Care through...

increased use of acute stroke treatments

Numerator: EVT procedure initiated at this hospital using comprehensive tab variable 'Mechanical endovascular reperfusion (MER) therapy at this hospital?' (high missingness) and 'Catheter-based stroke treatment at this hospital?'

Denominator: Includes ischemic stroke patients arriving within 24 hours (excluding age <18 years, clinical trial, stroke occurred after hospital arrival (in ED/Obs/Inpatient)).

10. Median Door to Groin Time among those receiving EVT transfers included

[enter](#)
[fullscreen](#)

Time Table Trend Details



FSR Regional Dashboards Improves Quality Stroke Care through...

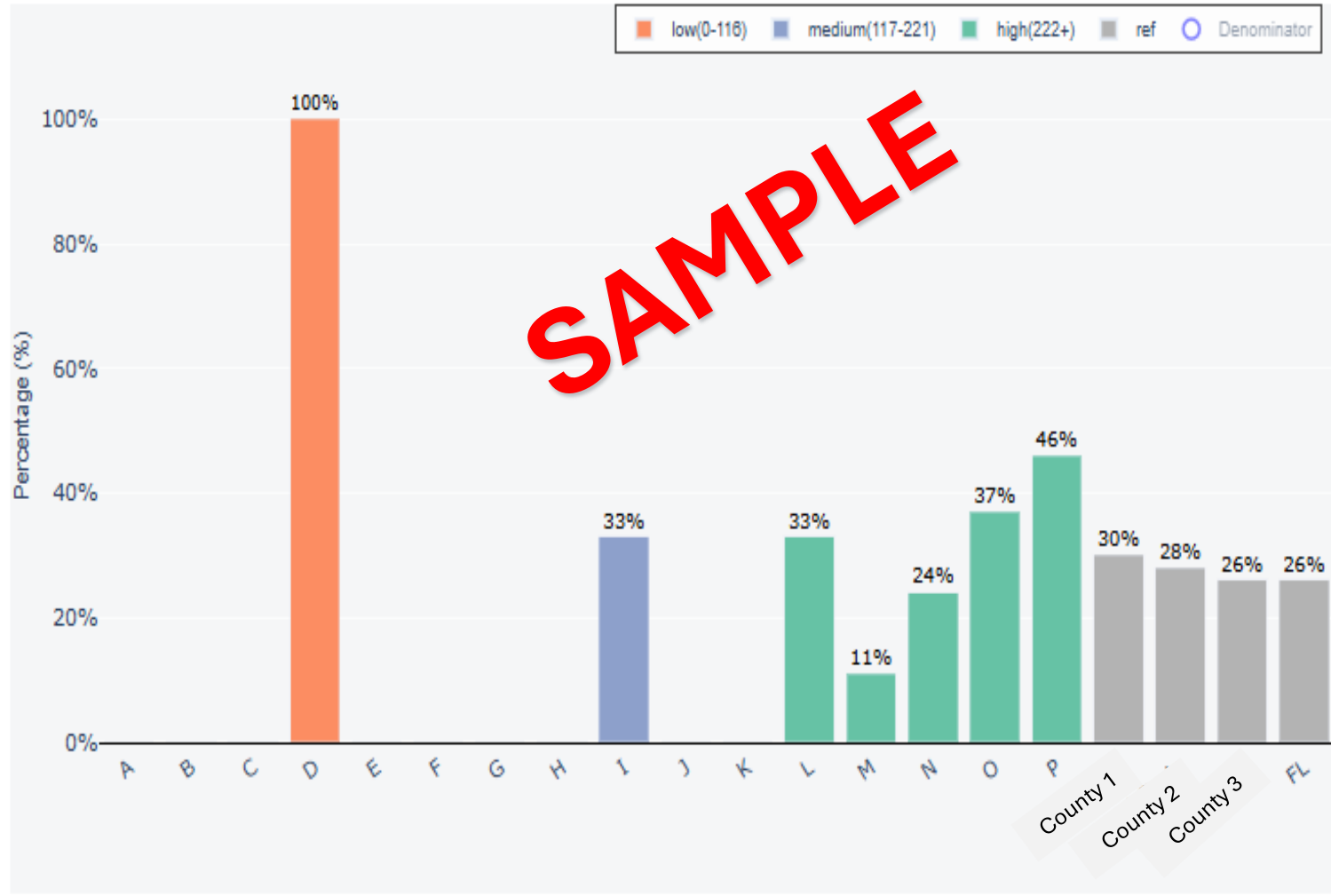
improved time to acute stroke treatment.

Numerator: Includes ischemic stroke patients who received mechanical endovascular reperfusion therapy during the hospital admission (Excluded age <18 years; stroke occurred after hospital arrival (in ED/Obs/Inpatient)); patients with date/time of arrival blank, not documented, or just MM/DD/YYYY; patients with date/time of arterial puncture blank, unknown, or just MM/DD/YYYY; patients with negative calculated time to arterial puncture; patients with length of stay >120 days; enrolled in a clinical trial as part of their treatment for stroke; elective carotid intervention. To calculate Door to Puncture time, both arrival time and arterial puncture time must be precise (date and time not missing). Transfers are included in this analysis

11. Percent mRS 0-2 at Discharge among those receiving EVT

[enter](#)
[fullscreen](#)

Percent Table Trend Age DIST NIHSS DIST Details



Numerator: Modified Rankin Score 0-2 at discharge

Denominator: Includes ischemic stroke patients who received EVT at this hospital with modified Rankin Score 0 to 6 at discharge (Excluded age <18 years, clinical trial, stroke occurred after hospital arrival (in ED/Obs/Inpatient)). A denominator of "0" indicates that the specific metric was completely unavailable (not applicable) or missing for that hospital

12. Percent mRS 0-2 at 90 Days among those receiving EVT

[enter](#)
[fullscreen](#)

Percent Table Trend Age DIST NIHSS DIST Details



Numerator: Modified Rankin Score 0-2 at 90 day follow-up

Denominator: Includes ischemic stroke patients who received EVT at this hospital with modified Rankin Score 0 to 6 at 90 days (Excluded age <18 years, clinical trial, stroke occurred after hospital arrival (in ED/Obs/Inpatient)). A denominator of "0" indicates that the specific metric was completely unavailable (not applicable) or missing for that hospital.

13. Percent symptomatic intracranial hemorrhage within 36 hours after EVT treatment

[enter](#)
[fullscreen](#)

Percent Table Trend Details



Numerator: Includes patients with complications of thrombolytic therapy - symptomatic intracranial hemorrhage within 36 hours after the onset of IA-tPA or MER treatment.

Denominator: Includes patients with a primary stroke diagnosis of ischemic stroke who received IA-tPA or MER treatment only at the indicated hospital (Excluded age <18 years, clinical trial, stroke occurred after hospital arrival (in ED/Obs/Inpatient)).

Benefits to Participation

FSR Regional Dashboards
for Quality Improvement

Improves Patient
Stroke Care



- Reviewed in stroke coalition meetings
- Shared among interdisciplinary stroke stakeholders



Want more information
or want to participate?

Contact the FSR -

flstrokeregistry@miami.edu